

ANNUAL REPORT

2023 - 2024



CRYSTAL LEE
FOUNDATION



ABOUT THE CRYSTAL LEE FOUNDATION

CRYSTAL LEE JOHNSON

Crystal Lee Johnson was a vibrant red-haired dynamo who was diagnosed with a rare form of cancer at the age of 16. Despite her diagnosis, Crystal successfully completed year 12, which was a major goal for her and a remarkable achievement. She also brought happiness and laughter to the many lives she touched.

On 14 January 2019, Crystal died at home with her family by her side.

Crystal dreamed of a foundation being formed in her honour that would help young people affected by a cancer diagnosis and their families.

And so, in 2019 The Crystal Lee Foundation was formed. We are a not-for-profit community organisation, registered with the Australian Charities and Not-for-profits Commission and hold Deductible Gift Recipient status with the Australian Taxation Office.



Five years on we are proud of what we have achieved in Crystal's memory and the many people we have reached out to in kindness during some of their toughest times.

OUR MISSION

We exist to support young people from birth to 24 who are faced with a cancer diagnosis, and their families.

We provide specialised bereavement and end-of-life counselling; practical support; community awareness building and memory making projects and activities.



OUR VALUES



OUR SERVICES

Family Support

Bereavement Counselling

OUR OTHER ENDEAVOURS

The Crystal Lee Foundation Op Shops in Koroit and Hamilton

Community Awareness Building



OUR PEOPLE

FOUNDATION PATRON

Dennis Naphthine

BOARD MEMBERS

Allison Patchett - Chair
Lorraine Blackmore – Treasurer
Leisa McCosh - Secretary
Jake Gardner
Rachael Gleeson
Raj Samrai
Carolyn Roache
Trevor Holcombe

VOLUNTEERS

Jill French
Nicky Atkinson
Jenni Sonne
Kate Chandley
Debbie Phelan
Veronica Delaney
Helen Foote
Gillian Roberts
Andrea Coney
Lyn Battista
Sharyn Cooke

STAFF

Julienne Clifford– Executive Officer
Michael Turner-Downs – Bereavement Counsellor
Jo Sinclair – Retail Manager
Julie Carter – Koroit Op Shop Manager



CHAIRPERSON'S REPORT

On behalf of the Board of Directors, I am pleased to present the Chair's report for the Crystal Lee Foundation for the year ending 30 June 2024.

It has been a year of progress, learning, and achievement, as well as reflection and adaptation to ongoing challenges within charity giving. I have been constantly heartened by the warmth and generosity of the South West Community and would like to take this opportunity to share some of the key activities, accomplishments, and strategic directions that have defined our journey this year.



This year, the Crystal Lee Foundation has made significant strides in achieving its mission of supporting young people from birth to 24 who are faced with a cancer diagnosis, and their families. In addition, we have provided specialised bereavement and end-of-life counselling; practical support; community awareness building and memory making projects and activities. Despite facing external economic challenges which affect the way people give their time and money to charities such as ours, the resilience of our team, the dedication of our volunteers, and the support of our sponsors have been pivotal to our success.

We've focused on three key areas: growth to assist more people, sustainability and providing a sense of community. These focus areas have guided our decision-making and strategic initiatives throughout the year.

Over the past 12 months, we have reached several important milestones. Some of our key achievements include:

- Opening a second Op Shop (In Hamilton)
- Growth in Bereavement Counselling and its positive Impact on those who seek this service
- Financial Performance: We have maintained our financial health despite the economic pressures of giving. Through prudent financial management and the support of our donors and partners, we have been able to achieve the opening a second Op shop and attending and running fundraising events this year.
- Governance Improvements: The board has been committed to enhancing governance practices. This year, we have implemented new policies, improved strategic planning to set us up for success in 2025.
- Creating a Sense of Community through our Fund-Raising Activities: We have strengthened our relationships with our communities and stakeholders by increasing our volunteer base and our wider communications. This has fostered a stronger connection with those in need of support and counselling.



This year, the board has been actively engaged in steering the foundation toward achieving its goals. We have held six board meetings and board committee meetings focusing on fundraising, community engagement and program development and finance & risk. The board continues to provide oversight, guidance, and strategic leadership to ensure the long-term success of The Crystal Lee Foundation.

As we look toward the coming year, we are filled with optimism and a clear sense of purpose. Our strategic priorities for the upcoming year include a focus on growth to enable us to offer assistance to more people

We are committed to ensuring The Crystal Lee Foundation remains sustainable, impactful, and continues to create a sense of community in Koroit and Hamilton through our Op shops, and indeed the whole South West Region, continuing to build on the solid foundation laid this year.

I would like to express my deep gratitude to all of you—our staff, volunteers, donors, sponsors, and partners—for your continued support and belief in The Crystal Lee Foundation and its ability to help those in need of our support. The success of the foundation reflects the collective effort and passion of everyone involved. I also extend my sincere thanks to my fellow volunteer board members for their unwavering dedication, leadership and time.

Together, we will continue to work toward making a meaningful difference in the lives of those in need of the services we offer and achieving our shared vision for the future reflecting Crystals dream of a foundation helping young people affected by a cancer diagnosis and their families.

Allison Patchett

Board Chair



EXECUTIVE OFFICERS REPORT



It has been an exciting and heart-warming time to be part of the Crystal Lee Foundation. Five years have passed since the Foundation launched in October 2019 and in that time our team have reached out with kindness to help people in some of their toughest times all in honour of Crystal. We are pleased that more of the community are learning about the Foundation and the support and assistance we can provide, and we are extremely grateful for those who have shown a willingness to partner with us in fundraising activities.

It has been a privilege for me personally to speak about the Foundation to a number of community groups and through the local media and I am heartened how many other people and groups are showing real care for others in their community by referring them to us for support.

Economic times have been challenging for all, meaning cash donations are harder to source and many grant programs have been oversubscribed. In a bid to be as self-sufficient as possible our team collectively made the decision to open a second Op Shop in Hamilton based on the very successful model in Koroit. This has not been without its challenges like any new business but under Jo Sinclair’s leadership we have a gorgeous place in Thompson St that the community are taking to heart, and we have faith that it will grow to become the same community hub that the Koroit store has become.

As our small charity has grown in size and complexity we have worked hard to ensure that our policies and processes ensure good stewardship of our resources and care for our people.

I would like to extend my appreciation to Jake Gardner the inaugural Chair of the Crystal Lee Foundation Board who stepped down this year after providing great service since 2019 but fortunately continues on as a member of the Board. I certainly appreciate all his help with our information technology needs and his enthusiastic support in our fundraising activities.

I would also like to welcome Allison Patchett as the new Board Chair, bringing a wealth of experience and fresh ideas to the Foundation and I look forward to continuing to work closely with her.

Leaving the Board this year will be Lorraine Blackmore, Crystal’s Aunt who promised two years assistance and is still here after five. From butchers’ paper around the kitchen table to a charity operating over three sites with 20 volunteers, 4 part time staff and over 100 local people helped. She should be very proud of her role both as Secretary and Treasurer over all these years. I thank her on behalf of the Crystal Lee Foundation, the community and personally for supporting me and making me welcome in my Executive Officer role these past 18 months.

Julienne Clifford
Executive Officer



FAMILY SUPPORT PROGRAM

We know that each year in South West Victoria up to 10 young people under the age of 25 years will be diagnosed with cancer. For those under eighteen years of age this means months of treatment in Melbourne followed by many months of return visits for treatment and monitoring.

Families can face separation, financial stress and social isolation on top of the very real fears for their gravely ill child.

For our young adults with cancer there are many impacts including to education, careers, finances and social interactions.

The Crystal Lee Foundation is here to help during these challenging times with compassion and with knowledge gained through our own lived experience and that of others.

This year we added two young families to our program and continued to walk beside two others on their long journey with cancer.



We are always happy to help more, if and where we can. Thanks to the wonderful Warrnambool Kiwanis we are now able to offer

beautiful “Forget Me Not” boxes to hold photos and item to remember an important time in young lives.



Sometimes the most valuable role our volunteers take on is to listen without judgement and with a complete guarantee of confidentiality. Sometimes a bit of financial support through grocery, meal or petrol vouchers is the immediate need. Our volunteers are both compassionate and practical with experience of navigating the healthcare and associated systems and a good knowledge of what can be tapped into on the local level.

Whether directly, or through our website, it is a goal of the Crystal Lee Foundation to extend the support we provide and increase the families we assist. This year has been marked by very productive engagement with the Regional Outreach Program of the Paediatric Integrated Cancer Service.



BEREAVEMENT COUNSELLING

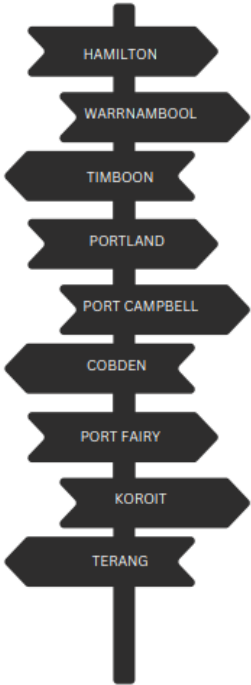


As more people have come to understand that our Bereavement Counselling is open to all regardless of age, cause of death or when the bereavement occurred, so has our number of clients increased with 51 clients being seen over 139 counselling sessions and 237 hours. While 72% of clients are Warrnambool based, Michael is also regularly travelling to many locations in South West Victoria to offer support. We are grateful for the businesses and community organisations who have provided comfortable and private spaces for him to meet with those grieving.

Grief touches us all and we each deal with it in different ways. It is a privilege to provide a space for people to sit with their grief, to remember their person and to begin to imagine a different life without them. The feedback we

On the first Sunday in May 2024, we held our first event to mark International Bereaved Mother’s Day. Our Bereavement Counsellor Michael Turner-Downes led a very moving

have received from those Michael has helped confirms just how vital this service is. “Michael has changed my life” was shared by one grateful client.



No fees are charged, no limits are set on the number of visits and clients can self-refer.

reflection and service and mums stayed to chat over a lovely afternoon tea provided by the Friends of St Brigid’s. Thank you to Guyatt’s Funerals for your support for this event which we hope to repeat annually.



OP SHOP

This year we welcomed Julie Carter as Op Shop manager for Koroit. Julie brings with her a passion for sustainable fashion and a wonderful ability to put together classy and affordable outfits for our customers. The store always looks great under her discerning eye. The Koroit Op Shop is important to us as the original public face of the Foundation, and it does triple duty through supporting raffles and other fundraising efforts and especially by informing the community of the support services offered by the Crystal Lee Foundation. Our boutique Op Shop model developed by our founder Jo Sinclair shows due respect to our customers, our community and our donors.



And so, it was both brave and exciting to open a new Op Shop in Hamilton in May 2024. Situated at 75 Thompson Street it is a lovely bright Art Deco style place. Opening day saw queues of people lining up outside and we very much appreciate how the local community has supported us with donations, purchases and sharing Crystal's story.

We look forward to some great days ahead and forging even more connections with the community



We very much appreciate the special donation collections that groups have supported including Beyond Bank and Anchor Point Retirement Village who regularly collect on our behalf.

Our awesome volunteers in Koroit and Hamilton care so much about the shop, its customers and the Crystal Lee Foundation and we could not do any of this without them. A huge thank you is due for your hard work and your support and patience during times of change.



RAISING AWARENESS

Crystal wanted to help educate the community on the needs of teenagers in the health system which are different from those of young children and the older population. This year we had fruitful meetings with South West Health Services to discuss how the needs of young people could be best accommodated in the new Warrnambool Base Hospital development.

Through the office of the Hon Dan Tehan Member for Wannon we also made some great connections with the Regional Outreach Program of the Paediatric Integrated Cancer Service who have in turn introduced us to other regional groups doing great things in their area to support young people impacted by cancer.



We are regular participants in the South West Volunteer Network and have collaborated on events with Mosswood, Volcano Produce and Friends of St Brigid's and expect more opportunities to come.

The media has been happy to share our story and what is happening at the Foundation, and we have used this platform to inform and educate together with talks to community groups and schools.



Getting out and about at community markets, Warrnambool Volunteer Expo, Picnic in the Paddock, our High Tea at the Wharf in Port Fairy and our Noodledoof fashion parade has given us a platform to tell Crystal's story and to inform the community of the challenges faced every year in South West Victoria by up to 10 newly diagnosed cancer patients.

Thanks to a generous grant from the South West Community Fund, we have been able to produce brochures signage and other merchandise and our logo (a beautiful design by Crystal herself) is becoming more and more well known in the community.



2024-25 AT A GLANCE

4

Families assisted through our Family Support Program

Koroit Op Shop recognised in Sustainability category of Moyne Shire Business Awards

51

Bereavement Counselling Clients

237

Counselling Hours across 139 sessions

New Board Chair, Allison Patchett welcomed

Second Op Shop opened in Hamilton

Fabulous Fashion Parade Fundraiser held at Noodledoof



CRYSTAL LEE FOUNDATION INCORPORATED

RECEIPTS AND PAYMENTS STATEMENT

FOR THE YEAR ENDED 30 JUNE, 2024

	2024	2023
	\$	\$
RECEIPTS		
Donations	35,969	4,472
Fundraising	13,567	11,198
Grants	29,958	35,000
Interest	1,322	360
Op Shop Sales	100,222	100,057
Wage Subsidy	4,173	4,250
	185,211	155,337
EXPENSES		
Advertising	846	966
General expenses	-	2,925
Bank Fees	1,087	1,242
Consulting & Accounting	1,045	139
Counselling	3,302	3,168
Electricity	1,559	1,579
Fundraising	6,484	-
Family Support	822	1,612
Insurance	4,120	5,140
IT/Phone	1,654	4,165
Leave Expenses	8,913	-
Office expenses	779	476
Op Shop Fit Out	5,663	-
Op Shop Expenses	1,012	-
Printing & Stationery	1,678	333
Professional Development	801	390
Rent	24,726	22,421
Rates	3,567	2,252
Repairs & Maintenance	1,360	2,087
Software Expense	673	-
Superannuation	12,566	7,390
Travel	5,631	-
Wages	117,416	69,284
Workcover	6,945	724
	212,649	126,293
Net (Deficit) / Surplus for the year ended 30 June	(27,438)	29,044



CRYSTAL LEE FOUNDATION INCORPORATED

STATEMENT OF BALANCES

FOR THE YEAR ENDED 30 JUNE, 2024

	2024	2023
	\$	\$
Current Assets		
Operating Account	1,118	3,688
Donations Account	48,353	12,759
Term Deposit 1	10,000	40,389
Term Deposit 2	15,386	-
Op Shop Account	4,386	36,582
General Bank Account	168	-
	<u>79,411</u>	<u>93,418</u>
GST	4,763	-
TOTAL ASSETS	<u>84,174</u>	<u>93,418</u>
Current Liabilities		
PAYG	10,919	3,091
Superannuation Payable	1,150	-
Wages Payable	303	-
Annual Leave Provision	8,642	-
	<u>21,014</u>	<u>3,091</u>
Non - Current Liabilities		
Long service leave Provision	271	-
TOTAL LIABILITIES	<u>21,285</u>	<u>3,091</u>
Net Assets	<u>62,889</u>	<u>90,327</u>
Equity		
Retained Earnings at 1 July	90,327	61,283
Year Earnings Surplus	(27,438)	29,044
	<u>62,889</u>	<u>90,327</u>



CRYSTAL LEE FOUNDATION INCORPORATED

CASH & BANK BALANCE RECONCILIATION

AS AT 30 JUNE, 2024

	2024	2023
	\$	\$
Cash Book Balance at 1 July	93,418	61,283
Add: Receipts	185,211	155,337
Less: Payments	<u>(199,218)</u>	<u>(123,202)</u>
Cash Book Balance as at 30 June	<u>79,411</u>	<u>93,418</u>



CRYSTAL LEE FOUNDATION INCORPORATED
NOTES TO AND FORMING PART OF THE FINANCIAL STATEMENTS
FOR THE YEAR ENDED 30 JUNE, 2024

Note 1 - Statement of Significant Accounting Policies

These Financial Statements are a special purpose financial report prepared in order to satisfy the financial reporting requirements of the Associations Incorporation Reform Act (Vic) 2012 and the Australian Charities and Not-for-profits Commission Act 2012. The Committee has determined that the Organisation is not a reporting entity.

The Financial Report has been prepared on a cash basis and is based on historic costs and does not take into account changing money values or, except where specifically stated, current valuations of non current assets.

The following significant accounting policies, which are consistent with the previous period unless otherwise stated, have been adopted in the preparation of this financial report.

Accounting Policies

(a) Revenue

Grant revenue is recognised in the income statement when it is controlled. When there are conditions attached to grant revenue relating to the use of those grants for specific purposes it is recognised in the balance sheet as a liability until such conditions are met or services provided.

Donations and bequests are recognised as revenue when received.

(b) Goods and Services Tax (GST)

Revenues, expenses and assets are recognised exclusive of GST as the Foundation is GST registered from 1 July 2023. Receivables and payables in the Statement of Balances are shown inclusive of GST.

(c) Income Tax

The Committee believes the Association is exempt from the payment of tax under Section 50-10 of the Income Tax Assessment Act 1997. The Foundation has received income tax exemption from the ATO.

(d) Cash and Cash Equivalents

Cash and cash equivalents include cash on hand, deposits held at call, other short term highly liquid investments with original maturities of three months or less.

Note 2 - Events After the Balance Sheet Date

The Committee are not aware of any events that have occurred subsequent to 30 June, 2024 which would materially impact these financial statements.

Note 3 - Related Party Transactions

The Association did not enter into any contracts with related parties.



CRYSTAL LEE FOUNDATION INCOPORATED
STATEMENT BY MEMBERS OF THE COMMITTEE

The Committee has determined that the Association is not a reporting entity and that this special purpose financial report should be prepared on a cash receipts and payments basis.

I, on behalf of the Committee of the Crystal Lee Foundation Incorporated, certify that the financial report as set out on pages 1 to 3, satisfy the requirements of the *Australian Charities and not-for-profits Commissions Act 2012* and :

- (a) give a true and fair view of the financial position and the performance of the Crystal Lee Foundation Incorporated during and at the end of the financial year of the association ending on 30 June, 2024.
- (b) provide reasonable grounds to believe that Crystal Lee Foundation Incorporated is able to pay its debts as and when they fall due.

This declaration is signed in accordance with subsection 60.15(2) of the *Australian Charities and not-for-profits Commissions Regulation 2013*.

Name: Allison Patchett
President/Chair

Signed: 

Dated this 22 day of November 2024



**INDEPENDENT AUDITOR'S REPORT TO THE MEMBERS OF
CRYSTAL LEE FOUNDATION INCORPORATED**

Opinion

We have Audited the financial report of the Crystal Lee Foundation Incorporated, which comprises the statement of receipts and payments for the year ended 30 June, 2024, and statement of balance at that date and the Committee's declaration.

In our opinion, except for the effects of the matter described in the Basis of Qualified Opinion section our report, the accompanying financial report gives a true and fair view, in all material respects, of the financial position of the Crystal Lee Foundation Incorporated as at 30 June, 2024 of its financial performance and its cash flows for the year then ended in accordance with the accounting policies described in Note 1 to the financial statements, the requirements of the *Associations Incorporation Reform Act 2012* and the *Australian Charities and Not-for-profits Commission Act 2012*.

Basis for Qualified Opinion

Income - As it is common for Associations of this type, it is not practicable for the Committee to maintain an effective system of internal control over all sources of income prior to its receipt, nor have we been provided with adequate assurance that all financial transactions have been recorded through records provided to us. Accordingly, our Audit in relation to income was limited to amounts recorded in the accounting records of the entity.

We conducted our Audit in accordance with Australian Auditing Standards. Our responsibilities under those standards are further described in the Auditor's Responsibilities for the *Audit of the Financial Report* section of our report. We are independent of the entity in accordance with the ethical requirements of the Accounting Professional and Ethical Standards Board's *APES 110 Code of Ethics for Professional Accountants* (the Code) that are relevant to our Audit of the financial report in Australia. We have also fulfilled our other ethical responsibilities in accordance with the Code.

We believe that the Audit evidence we have obtained is sufficient and appropriate to provide a basis for our opinion.

Emphasis of Matter - Basis of Accounting

We draw attention to Note 1 to the financial report, which describes the basis of accounting. The financial report has been prepared for the purpose of fulfilling the registered entity's financial reporting responsibilities under the *Associations Incorporation Reform Act 2012*. As a result, the financial report may not be suitable for another purpose. Our opinion is not modified in respect of this matter.

Our Offices:

Warrnambool
Casterton

Colac
Mortlake

Hamilton
Port Fairy

Mount Gambier
Terang

Camperdown
Timboon

info@sinclairwilson.com.au

www.sinclairwilson.com.au

Liability limited by a scheme approved under Professional Standards Legislation



Responsibility of the Committee and Those Charged with Governance for the Financial Report

The Committee of the registered entity is responsible for the preparation of the financial report that gives a true and fair view and have determined that the basis of preparation described in Note 1 to the financial report is appropriate to meet the requirements of the Associations Incorporation Reform Act 2012 [and the needs of the members]. The Committee's responsibility also includes such internal control as the Committee determine is necessary to enable the preparation of a financial report that gives a true and fair view and is free from material misstatement, whether due to fraud or error.

In preparing the financial report, the Committee is responsible for assessing the registered entity's ability to continue as a going concern, disclosing, as applicable, matters relating to going concern and using the going concern basis of accounting unless the responsible entities either intend to liquidate the registered entity or to cease operations, or have no realistic alternative but to do so.

Auditor's Responsibilities for the Audit of the Financial Report

Our objectives are to obtain reasonable assurance about whether the financial report as a whole is free from material misstatement, whether due to fraud or error, and to issue an Auditor's report that includes our opinion. Reasonable assurance is a high level of assurance, but is not a guarantee that an Audit conducted in accordance with the Australian Auditing Standards will always detect a material misstatement when it exists. Misstatements can arise from fraud or error and are considered material if, individually or in the aggregate, they could reasonably be expected to influence the economic decisions of users taken on the basis of the financial report.

As part of an Audit in accordance with Australian Auditing Standards, we exercise professional judgement and maintain professional scepticism throughout the Audit. We also:

- Identify and assess the risks of material misstatement of the financial report, whether due to fraud or error, design and perform Audit procedures responsive to those risks, and obtain Audit evidence that is sufficient and appropriate to provide a basis for our opinion. The risk of not detecting a material misstatement resulting from fraud is higher than for one resulting from error, as fraud may involve collusion, forgery, intentional omissions, misrepresentations, or the override of internal control.
- Obtain an understanding of internal control relevant to the Audit in order to design Audit procedures that are appropriate in the circumstances, but not for the purpose of expressing an opinion on the effectiveness of the registered entity's internal control
- Evaluate the appropriateness of accounting policies used and the reasonableness of accounting estimates and related disclosures made by responsible entities.



- Conclude on the appropriateness of Committee's use of the going concern basis of accounting and, based on the Audit evidence obtained, whether a material uncertainty exists related to events or conditions that may cast significant doubt on the registered entity's ability to continue as a going concern. If we conclude that a material uncertainty exists, we are required to draw attention in our Auditor's report to the related disclosures in the financial report or, if such disclosures are inadequate, to modify our opinion. Our conclusions are based on the Audit evidence obtained up to the date of our Auditor's report. However, future events or conditions may cause the registered entity to cease to continue as a going concern.
- Evaluate the overall presentation, structure and content of the financial report, including the disclosures, and whether the financial report represents the underlying transactions and events in a manner that achieves fair presentation.

We communicate with those charged with governance regarding, among other matters, the planned scope and timing of the Audit and significant Audit findings, including any significant deficiencies in internal control that we identify during our Audit.



**FELICITY MELICAN
PRINCIPAL**

Dated this 22 November 2024

257 Timor Street
Warrnambool VIC 3280

Ref: 1453310_1



THANK YOU

The Crystal Lee Foundation receives no government funding yet delivers our support services free of charge throughout south west Victoria. Our Op Shop revenue plays an important role as a source of funding, but we have many other organisations and individuals to thank for their assistance.



GRANTS

During the 2023 -24 financial year we were successful in obtaining a number of grants; most local and some national. We extend our heartfelt appreciation to these generous supporters whose partnerships have been instrumental in enabling us to expand our reach, innovate our programs, and further our impact.

This year the foundation was supported by the following grants:

- Midfield Group
- Moyne Shire Council Community Assistance Fund
- South West Community Fund
- Australian Government Volunteer Grants

FUNDRAISING

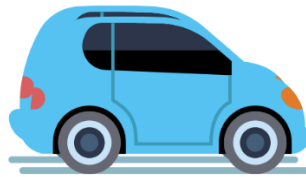
Our major fundraising event was the Crystal Lee Foundation High Tea which was held at The Wharf Restaurant on Sunday 22 October 2023 . We were joined by ninety guests who enjoyed afternoon tea



and heard from a number of community organisations about their work in the community. Our Spring Raffle was drawn on the day and won by one of the attendees which was great fun.

2024 kicked off with a bang with attendees of the Lake School in Koroit once again being generous and eager customers in our Koroit Op Shop. In April our Koroit Op Shop participated with enthusiasm in the Irish Festival taking advantage of the amazing crowds to sell some wares and culminating in the drawing of our Autumn Raffle.

With increasing demand for our bereavement counselling services across Southwest Victoria, we undertook a new campaign called the \$100 Club with the theme of “Keeping Michael on the Road”. Over \$5,000 was raised which enables Michael to travel to towns in Glenelg, Southern Grampians, Corangamite, Moyne and Warrnambool local government areas on a regular basis to support people their grieving process.



Moyne Health Services Koroit Seniors Program went the extra mile with their fundraising event held at the Koroit Football Netball Club in late June 2024 with members Bernie Murray and Lyn Marney having their heads shaved in return for donations. Almost \$3,000 was raised and once again we witnessed the great support of the Koroit community. Thank you to Annemaree Stonehouse for creating and organising the event.



We happily partner with community organisations to fundraise especially where there is a strong alignment of organisational values.

Our charity is registered with the Container Deposit Scheme for South West Victoria, and we thank those individuals who donate to us through this process including Port Fairy RSL who recycles 100% of eligible containers with the proceeds coming to our Foundation. This all sits very nicely with our commitment to environmental sustainability.



OUR EVERYDAY SUPPORTERS

To everyone who buys a raffle ticket, attends a function, donates clothing or homewares to the Crystal Lee Foundation Op Shop or who goes on line to make a one-off or regular donation; we really appreciate your assistance. When you like and share our Facebook and Instagram posts and tell others about our organisation, it helps us to reach more people with support.

To those small businesses who gave us a discounted price or even donated goods or services free of charge, you have made it that much easier to do what we do:

- Cassigns
- Toyworld Warrnambool
- Dan Murphy's
- Flying Horse Tavern
- Mc Donald's East Warrnambool
- Willow & Saige
- Friends of St Brigid's
- Koroit CWA
- Koroit Football Netball Club
- Moyne Health Services Koroit Seniors Program
- Port Fairy Rotary
- Port Fairy RSL
- Guyett's Funerals

OUR LOCAL MEDIA

We feel we have a very important story to tell about local people who are there to help others with compassion and kindness at their most challenging times. We are grateful (in no particular order) to the local media outlets who have shared our story with enthusiasm: The Warrnambool Weekly, 3YB, Ace Radio Hamilton, Fitzmedia, The Hamilton Spectator, The Standard and Coast FM.



OUR CORPORATE SPONSORS AND DONORS

We are especially grateful to our Corporate sponsors, many of whom have been with us from the beginning and without whom it would not be possible to offer our Bereavement Counselling Service and Family Support Service to the communities of South West Victoria.



If you would you like to support the work of the Crystal Lee Foundation or to learn more about us, head to crystallee.org or contact us at info@crystallee.org.

